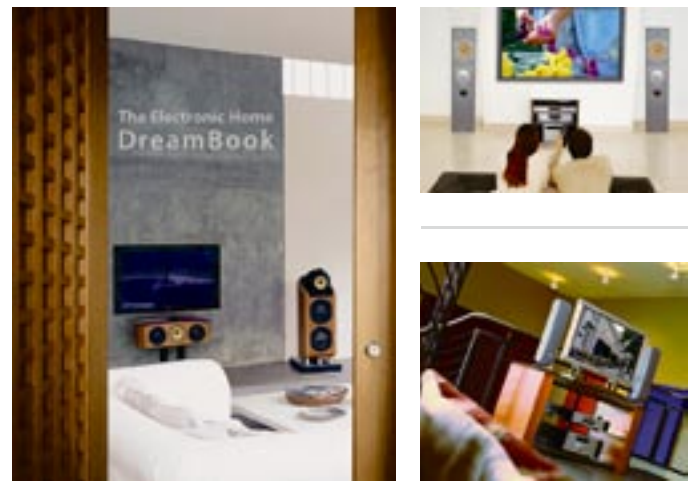


The Electronic Home DreamBook provides you with visualizations of home entertainment electronics that you might not have dreamed possible.



Visit www.bwspeakers.com and download your copy today.

B&W Loudspeakers of America
54 Concord Street
North Reading, MA 01864-2699
Tel: 978.664.2870 Fax: 978.664.4109
www.bwspeakers.com

IN-WALL

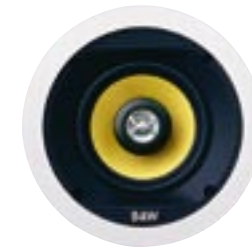
POCKET GUIDE



B&W
Bowers & Wilkins

CCM50

1" polymer diaphragm tweeter, 5" Kevlar® bass.



DESCRIPTION

The CCM 50 is a true high quality ceiling-mount speaker which is ideal for small systems where space is limited. The Ultra-12 tweeter features low diffraction effect protection ensuring clear high frequencies and a treble contour switch to cut or boost the high frequencies. The frame incorporates "Swing Out Dogs" for effortless installation.

PMK

Optional pre-mount kit packed and sold separately. PMK-50

BACK BOX

None

CCM616

1" soft dome tweeter, 6.5" glass fibre bass.



DESCRIPTION

CCM 616 is a high performance ceiling speaker that's simplicity itself to install and use. A 2-way design, featuring a 165mm (6.5") woven glass fibre cone bass / midrange driver and a coaxial Ultra-12 tweeter in a neat circular ceiling mount chassis, the CCM 616 incorporates quick and easy swing-out dog fixings. It is a perfect speaker for those indulgent extra locations - the bathroom, the kitchen - that define the real luxury of custom installed audio.

PMK

Optional pre-mount kit packed and sold separately. PMK-65

BACK BOX

TBA

CCM626

1" soft dome tweeter, 6.5" glass fibre bass. Aimable tweeter, adjustable tweeter level control.



DESCRIPTION

CCM 626 is a 2-way ceiling speaker incorporating an offset adjustable tilt tweeter and a three-position EQ switch to provide extra installation versatility by allowing the sound to be tailored to the installation. Offsetting the tweeter smooths its response, while the adjustable tilt provides directional adjustment and the EQ switch offers high frequency tonal options. CCM 626 features a 165mm (6.5") woven glass fibre cone bass/midrange driver and an Ultra-12 tweeter in a chassis incorporating simple and effective swing-out dog fixings.

PMK

Optional pre-mount kit packed and sold separately. PMK-65

BACK BOX

TBA

CCM636

1" silk dome tweeter, 6.5" glass fibre bass, aimable tweeter, adjustable tweeter level control.



DESCRIPTION

The CCM 636 is a ceiling speaker distinguished by its adjustable tilt offset 25mm (1") soft dome tweeter. It brings both smoother and more detailed high frequency performance to a package that also includes a woven glass fibre 165mm (6.5") bass/midrange driver and three-position switchable high frequency equalization. Installation simplicity is catered for by a simple and effective integrated swing out dog fixing chassis. CCM 636 is a classically simple and cost effective route to high quality ceiling mount sound.

PMK

Optional pre-mount kit packed and sold separately. PMK-65

BACK BOX

TBA

CCM65

1" swivel metal dome tweeter, 6.5" Kevlar® bass.



DESCRIPTION

The CCM 65 is a true high performance ceiling-mount speaker. The tweeter has a 1" metal dome tweeter and a treble contour switch to cut or boost the high frequencies. The frame incorporates "Swing Out Dogs" for effortless installation. The tweeter housing pivots for adjustable off-axis treble response.

PMK

Optional pre-mount kit packed and sold separately. PMK-65

BACK BOX

Model BBC

CCM646S

2 x 1" soft dome tweeters. 6.5" glass fibre bass. Adjustable tweeter level control.



DESCRIPTION

One ceiling speaker for two channels, the CCM 646S is a dual, 2-way ceiling speaker featuring a 165mm (6.5") twin voice coil, woven glass fibre cone bass/midrange driver and two offset Ultra-12 tweeters in a chassis incorporating simple and effective swing-out dog fixings. The twin voice coil bass/midrange driver and tweeters allow a stereo signal to be combined to facilitate the use of just one ceiling speaker in a single installation area without the loss of one audio channel. The CCM 646S also includes three-way switchable high frequency equalization.

PMK

Optional pre-mount kit packed and sold separately. PMK-65

BACK BOX

CCM746S

2 x 1" metal dome tweeters. 6.5" Kevlar® bass. Adjustable tweeter level control.



DESCRIPTION

The combination of convenience and performance that is a feature of the entire Custom Installation range is no better demonstrated than by the CCM 746S ceiling speaker. It marries a woven Kevlar® coned twin voice-coil 165mm (6.5") bass/midrange driver with an offset array of two high performance 25mm (1") aluminium dome tweeters. Thanks to its highly accurate and natural sound, Kevlar® features on our most advanced high performance hi-fi speakers and it brings the same qualities to the CCM 746S. The twin voice coils and tweeters combine the stereo signal to enable the use of just one ceiling speaker in an installation zone without the loss of one audio channel. The CCM 746S also includes three-way switchable high frequency equalization.

PMK

Optional pre-mount kit packed and sold separately. PMK-65

BACK BOX

TBA

CCM618

1" soft dome tweeter. 8" glass fibre bass. Adjustable tweeter level control.



DESCRIPTION

CCM 618 is a 2-way ceiling speaker featuring a 200mm (8") woven glass fibre cone bass/midrange driver and an offset, adjustable tilt Ultra-12 tweeter in a chassis incorporating simple and effective swing-out dog fixings. The larger bass/midrange driver of the CCM 618 provides improved low frequency performance and increased sound level capability. The tilting tweeter and three-way EQ switch of the CCM 618 offer directional adjustment and high frequency tonal options allowing the sound to be more tailored to the installation.

PMK

Optional pre-mount kit packed and sold separately. PMK-80

BACK BOX

TBA

CCM628

1" silk dome tweeter. 8" glass fibre bass. Adjustable tweeter level control.



DESCRIPTION

CCM 618 is a 2-way ceiling speaker featuring a 200mm (8") woven glass fibre cone bass/midrange driver and an offset, adjustable tilt silk dome tweeter in a chassis incorporating simple and effective swing-out dog fixings. The larger bass/midrange driver of the CCM 618 provides improved low frequency performance and increased sound level capability. The tilting tweeter and three-way EQ switch of the CCM 618 offer directional adjustment and high frequency tonal options allowing the sound to be more tailored to the installation.

PMK

Optional pre-mount kit packed and sold separately. PMK-80

BACK BOX

TBA

CCM80

1" swivel metal dome tweeter, 8" Kevlar® bass.



DESCRIPTION

The CCM 80 is a true high performance ceiling-mount speaker. The tweeter has a 1" metal dome tweeter and a treble contour switch to cut or boost the high frequencies. The frame incorporates "Swing Out Dogs" for effortless installation. The tweeter housing pivots for adjustable off-axis treble response.

PMK

Optional pre-mount kit packed and sold separately. PMK-80

BACK BOX

TBA

CCM 817

1" metal dome tweeter with Nautilus technology, 7" Kevlar® bass.



DESCRIPTION

The effort we put into speaker research is not just intended to benefit high-end hi-fi products but potentially to be applied anywhere that high quality audio is needed. By combining a woven Kevlar® cone 180mm (7") bass/midrange driver with a Nautilus™ tube-loaded, offset 25mm aluminium dome tweeter, the CCM 817 demonstrates this principle perfectly. The audible results are startling. The CCM 817 achieves a level of sound quality previously unknown for a ceiling speaker and, if mounted appropriately, is capable of rivaling that of conventionally located hi-fi speakers. For a custom install product however, the whole package, not just the sound quality, is vital and the CCM 817 combines its extraordinary performance with an integrated tilt chassis that enables orientation with the listening position and simple, effective swing out dog fixings.

PMK

Optional pre-mount kit packed and sold separately. PMK-817

BACK BOX

TBA

CWM500

1" soft dome tweeter, 5" Kevlar® bass.



DESCRIPTION

The CWM 500 has been designed for medium to small home applications. The tweeter is an ultra-12 tweeter with low diffraction effect protection. The tweeter has a treble contour switch to cut or boost the high frequency. The frame incorporates "Swing Out Dog" for effortless installation. IR receiver compatible.

PMK

Optional pre-mount kit packed and sold separately. PMK-500

BACK BOX

None

CWM6160

1" soft dome tweeter, 6.5" glass fibre bass.



DESCRIPTION

The CWM 6160 in-wall speaker is simplicity itself to install and, thanks to its B&W know-how and heritage, reaches a level of performance that will both surprise and delight. CWM 6160 is a 2-way design featuring a 165mm (6.5") woven glass fibre cone bass/midrange driver and an Ultra-12 tweeter in a neat rectangular chassis, incorporating quick and easy swing-out dog fixings. CWM 6160 is a perfect speaker for those indulgent extra locations - the bathroom, the kitchen - that define the real luxury of custom installed audio.

PMK

Optional pre-mount kit packed and sold separately. PMK-650

BACK BOX

BBW

CWM6260

1" silk dome tweeter, 6.5" glass fibre bass. Adjustable tweeter level control.



DESCRIPTION

The CWM 6260 is an in-wall speaker distinguished by its adjustable level 25mm (1") soft dome tweeter. It brings smoother and more detailed high frequency performance to a package that also includes a woven glass fibre 165mm (6.5") bass/midrange driver and three-position switchable high frequency equalisation. Installation simplicity is catered for by a simple and effective integrated swing out dog fixing chassis. The CWM 6260 is an elegantly engineered and cost effective route to high quality in-wall sound.

PMK

Optional pre-mount kit packed and sold separately. PMK-650

BACK BOX

BBW

CWM650

1" metal dome tweeter, 6.5" Kevlar® bass.



DESCRIPTION

The CWM 650 has been designed for large or small home applications. The tweeter is a 1" metal dome tweeter and the CWM650 features a treble contour switch to cut or boost the high frequency. The frame incorporates "Swing Out Dogs" for effortless installation. IR receiver compatible.

PMK

Optional pre-mount kit packed and sold separately. PMK-650

BACK BOX

BBW

CWM800

1" metal dome tweeter, 8" Kevlar® bass.



DESCRIPTION

The CWM 800 is a true high performance wall-mount speaker. The tweeter has a 1" metal dome tweeter and a treble contour switch to cut or boost the high frequencies. The frame incorporates "Swing Out Dogs" for effortless installation. IR receiver compatible.

PMK

Optional pre-mount kit packed and sold separately. PMK-800

BACK BOX

BBW

Signature 7 NT

1" Metal dome tweeter with Nautilus technology, 7" Kevlar® bass, bi-wirable.



DESCRIPTION

The Signature 7NT is a true Kevlar woofer based audiophile in-wall monitor. The Aluminium baffle has very high rigidity which, with the 7" Cast Frame, improves bass speed and attack. The crossover contains polypropylene capacitors resulting in transparency throughout the frequency range. The inverted drive unit configuration brings the Nautilus tube technology tweeter closer to ear height and the speaker has a switch to allow the HF level to be adjusted. The speaker can be bi-wired via high quality gold plated terminals.

PMK

Optional pre-mount kit packed and sold separately. PMK-800

BACK BOX

BBW

CWM Cinema

1" metal dome tweeter, 2 x 5.25" Kevlar® bass, shielded.



DESCRIPTION

The CWM Cinema is the ultimate home-cinema wall-mount speaker. The speaker has a unique 2-position tilt axis switch for optimum directional sound. The frame incorporates "Swing Out Dog" for effortless installation. Two Kevlar coned mid/bass drive units ensure powerful reproduction of even the most demanding of movie soundtracks.

PMK

Optional pre-mount kit packed and sold separately. PMK-800

BACK BOX

BBW

CDS6 S3

1" metal dome tweeter, 2 x 3" midrange, 5" woven Kevlar® bass, selectable dipole / monopole surround



DESCRIPTION

The CDS6 S3 is a dedicated surround speaker and is an in-wall version of the on-wall DS6 S3. The CDS6 S3 offers a choice of both monopole and dipole operation, so you may choose whichever type of operation best suits the conditions of the listening room, the size of audience and the type of programme being played. Indeed, you may use different modes for side and rear speakers, or change the characteristic for different types of programme.

The CDS6 S3, with its swing-out dogs, is easy to install in either new construction or retrofit situations and gives minimal intrusion into the living space. A pre-mount kit (PMK CDS6) is available to aid installation in new construction.

PMK

Optional pre-mount kit packed and sold separately. PMK-CDS6

BACK BOX

None

CWMLCR7

1 x 1" metal dome tweeter with Nautilus technology, 1 x 4" Kevlar midrange, 3 x 4" bass.



DESCRIPTION

The LCR7 features three 100mm (4") mica cone bass drivers, a 100mm (4") woven Kevlar® cone midrange driver and a Nautilus™ tube-loaded 25mm (1") aluminium dome tweeter.

The sound of the CWM LCR7 communicates every audio nuance from low bass to extreme treble and from whispering quiet to sound levels equivalent to live music. The mica bass drivers provide the low frequency snap characteristic of any really good loudspeaker, the Kevlar® midrange driver sounds both warm and clear, and the Nautilus™ inspired tweeter combines fine detail with relaxed neutrality.

The CWM LCR7 mounting frame incorporates simple and effective swing out dog fixings and at only 175mm wide the speaker can bring its sound quality to the tightest in-wall locations. An optional back box for the LCR7 improves sound insulation between adjoining rooms and defines the bass drivers' working volume.

PMK

Optional pre-mount kit packed and sold separately. PMK-LCR7

BACK BOX

TBA

CWM8180

1" metal dome Nautilus tweeter. 5" Kevlar cone FST midrange, 8" Rohacell cone bass.



DESCRIPTION

One of the first wave of new 800 Series in-walls that equate to the previous Signature models, the CWM8180 is a 3-way system benefiting from the 130mm (5") FST midrange driver of the Signature 8NT, but in a more compact package.

PMK

Optional pre-mount kit packed and sold separately. PMK-DS8/8180

BACK BOX

BB-DS8/8180

CWM DS8

3 x 1" metal dome Nautilus tweeters. 2 x 3" Kevlar cone midrange. 1 x 7" Kevlar mid/bass.



DESCRIPTION

The CWM DS8 is a switchable dipole / monopole surround speaker. Switching between dipole and monopole modes may be achieved either by a switch on the crossover, or remotely using a 12V trigger. Like all the newly designated 800 Series in-walls, it delivers true high-end performance.

PMK

Optional pre-mount kit packed and sold separately. PMK-DS8/8180

BACK BOX

BB-DS8/8180

CWMLCR8

1 x 1" metal dome tweeter with Nautilus technology, 2 x 5" Kevlar® mid / bass, 2 x 5" aluminium bass.



DESCRIPTION

The CWM LCR8 is a 2 1/2-way in-wall speaker incorporating twin 130mm (5") aluminium cone bass drivers, twin 130mm (5") woven Kevlar® cone bass/midrange drivers, and a Nautilus™ tube loaded 25mm (1") aluminium dome tweeter in a symmetrical array less than 220mm (8.7") wide. Technology of this sophistication is rare in an in-wall speaker. It achieves a -6dB bandwidth stretching from 35Hz to 50kHz and can generate sound levels equivalent to the largest scale live music or theatre performance. The raw facts, however, can never do justice to its sound.

Like the best conventional hi-fi speakers, the CWM LCR8 can transcend the recorded medium, suspend disbelief and bring a performance right into the home. Unlike conventional hi-fi, however, the CWM LCR8 can be almost invisible.

The CWM LCR8 mounting frame incorporates simple and effective swing out dog fixings. An optional back box improves sound insulation between adjoining rooms and defines the bass/midrange drivers' working volume.

PMK

Optional pre-mount kit packed and sold separately. PMK-LCR8

BACK BOX

BB-LCR8

SIGNATURE 8 NT

1" metal dome Nautilus tweeter on a rotatable subenclosure, 5" FST midrange, 2 x 7" Kevlar® bass. Optional backbox w/ extensive internal bracing recommended.



DESCRIPTION

The Signature 8NT is built around an extremely strong and rigid glass-filled polymer thermoset baffle. This provides the foundation for the drive units and fits into a steel wall frame, commensurate with the size and weight of the product. Two 7" pulp fibre/Kevlar® cone drivers provide well-extended and dynamic bass. Centrally placed between them is a sub-baffle, supporting the midrange and tweeter drivers. This sub-baffle may be rotated in 90 degree steps so that, no matter which way the complete system is oriented, the midrange and tweeter can always be positioned one above the other to optimize horizontal dispersion and maintain the correct balance for a widespread group of listeners – especially important for center channel applications. The midrange driver is a smaller, 5" version of the FST driver found in all 800 Series 3-way systems. The 1" aluminium dome tweeter is tube loaded, Nautilus style, to minimize delayed coloration. Naturally, the highest quality crossover components are used, with air core inductors throughout, and the system may readily be bi-wired.

PMK

Optional pre-mount kit packed and sold separately. PMK-Sig-8

BACK BOX

BB-Sig8

* Note: Separately packaged PMK - Sig 8 mounting kit (required when not used with backbox).